

# 25052

5,000 WC/ 5,000 WD

## INSTALLATION INSTRUCTIONS

1. Slide end plates over main cross tube of hitch.
2. Raise hitch in position, aligning receiver of hitch to desired location. Clamp each end plate with C-clamp to bottom of frame.
3. Using side plates of hitch as a drill guide, drill 1/2" diameter holes in frame.
4. Attach a thin piece of wire to each carriage bolt and run a spacer up the wire as shown in Fig 1. "Thread" open end of wires into frame and out holes drilled in Step 3. Pull wires into position so bolt stems fall below holes in hitch. Fasten hitch into position using flat washers, lock washers, and nuts. If there is not an access hole present in may be necessary to make one. (You may be able to loosen bumper on some models.)
5. Center main tube in end plates and drill hole (A) to 1/2" diameter. Drill one hole then place 4" bolt through hole. Then drill the other end and place remaining bolt in position.
6. Torque all 1/2"-13 x 1 1/2" bolts to 75 ft. lbs.

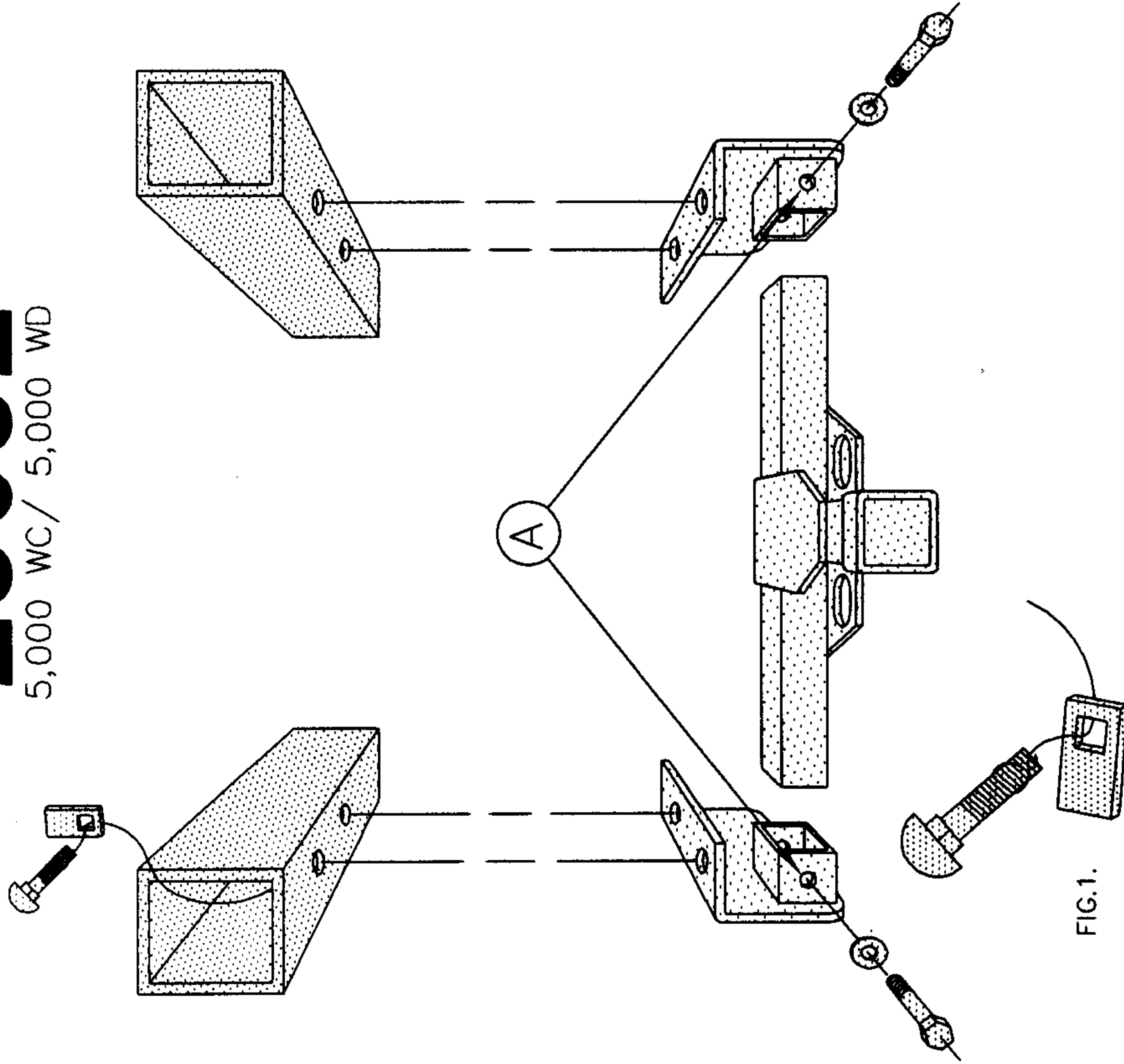


FIG.1.

## HARDWARE LIST

- 4 - 1/2"-13 x 1 1/2" Carriage Bolts
- 2 - 1/2"-13 x 4" Bolts
- 12 - 1/2" Flat Washers
- 6 - 1/2" Lock Washers
- 6 - 1/2"-13 Nuts
- 4 - 1/4" x 1" x 2" Carriage Spacers

**WARNING:** ALTHOUGH THIS HITCH IS DESIGNED TO SAFELY CARRY THE LOADS SPECIFIED, UNDER NO CIRCUMSTANCES DO WE RECOMMEND EXCEEDING THE TOWING VEHICLE MANUFACTURER'S RECOMMENDED TOWING CAPABILITIES. ALWAYS USE SAFETY CHAINS AND TRAVEL AT A SAFE SPEED.

## FIT LIST

Universal Motor Home

